

**SCHOOL ENROLLMENT
ANNUAL VARIANCES**

SCHOOL	2000-01 ENROLL	2001-02 ENROLL	% VAR	2002-03 ENROLL	% VAR	2003-04 ENROLL	% VAR	2004-05 ENROLL	% VAR	2005-06 ENROLL	% VAR	2006-07 PROJ	% VAR	Avg % VAR
AES	--	--	--	--	--	--	--	--	--	1441	--	1001	(-43.9)	--
CEB	869	815	-6.60	768	-6.10	830	8.00	805	-3.10	708	-13.70	718	1.40	-4.30
CHE	540	534	-1.10	549	2.70	563	2.50	513	-9.70	529	3.10	518	-2.10	-0.50
DIS	856	880	2.80	946	7.50	964	1.90	919	-4.80	982	6.80	992	1.00	2.84
FIE	981	1080	10.00	1206	11.60	1159	-4.00	1155	(-0.3)	1138	-1.40	1135	-0.20	4.05
GPE	752	793	5.40	765	-3.60	798	4.30	786	-1.50	701	-12.10	687	-2.00	-1.50
KHE	775	791	2.00	808	2.10	827	2.30	823	-0.40	831	0.90	822	-1.00	1.38
LAE	1105	826	(-33.7)	901	9.00	994	10.30	1082	8.80	1254	15.80	1193	-5.10	10.98
LES	648	645	-0.40	638	-1.00	638	0.00	636	-0.30	618	-2.90	597	-3.50	-0.92
MRE	572	574	0.30	561	-2.30	542	-3.50	578	6.60	592	2.40	571	-3.60	0.70
MBE	612	762	24.50	763	0.10	752	-1.40	775	3.00	727	-6.60	684	-6.20	3.92
MCE	580	579	-0.10	517	-11.90	519	0.30	542	4.40	548	1.10	533	-2.80	-1.24
OPE	548	569	3.80	592	4.00	585	-1.10	553	-5.70	558	0.90	552	-1.00	0.38
PES	988	989	0.10	1059	7.00	1105	4.30	1126	1.90	1108	-1.60	1124	1.40	2.34
ROE	--	757	--	798	5.40	936	17.20	974	4.00	1052	8.00	1055	0.20	8.65
RVE	833	760	-9.60	768	1.00	794	3.30	762	-4.10	785	3.00	749	-4.80	-1.88
SBJ	680	662	-2.70	664	0.30	667	0.40	674	1.00	616	-9.40	625	1.40	-1.00
SPC	--	--	--	--	--	--	--	610	--	721	18.10	696	3.50	18.10
TBE	805	875	8.60	987	12.80	1163	17.80	888	(-30.9)	1043	17.40	1165	11.60	14.15
TES	949	675	(-40.5)	666	-1.30	903	35.50	1227	35.80	905	(-35.5)	854	(-5.9)	23.33
WEC	1018	1000	-1.80	1044	4.40	1088	1.30	1051	-0.60	540	(-94.6)	568	5.10	0.83
WES	1114	979	-13.70	1010	3.10	1006	-0.30	949	-6.00	885	-7.20	914	3.20	-4.82
GCJH	934	997	6.70	992	-0.50	924	-7.30	966	4.50	880	(-9.7)	869	-1.20	0.85
LAJH	--	--	--	--	--	--	--	--	--	1066	--	1053	(-1.2)	--
LJH	1212	1286	6.10	1341	4.20	1364	1.70	1378	1.00	947	(-45.5)	966	2.00	3.25
OPJH	1149	1118	-2.70	1158	3.50	1226	5.80	1278	4.20	1385	8.30	949	(-45.9)	3.82
WJH	990	1022	3.20	987	-3.50	1133	14.70	1219	7.50	842	(-44.7)	841	-0.10	5.48
BLC	203	211	3.90	167	-26.30	204	22.10	202	-0.90	192	-5.20	190	-1.00	-1.28
KH JR/SR	1135	1182	4.10	1212	2.50	1273	5.00	1292	1.40	1371	6.10	1421	3.60	2.18
OLS K-8	--	--	--	--	--	--	--	--	--	--	--	1212	--	--
CHS	1635	1788	9.30	2027	13.30	1280	(-58.3)	1047	(-22.2)	1065	1.70	1203	12.90	8.10
FIHS	--	--	--	--	--	1338	--	1778	32.80	2043	14.90	2400	15.70	23.85
MHS	1522	1501	-1.30	1522	1.30	1522	0.00	1576	3.50	1754	11.20	2200	25.40	2.94
OPHS	2207	2225	0.80	2295	3.10	2218	-3.40	2307	4.00	2425	5.10	2680	10.50	1.92
RHS	1712	1815	6.00	1884	3.80	1741	(-8.2)	1665	(-4.5)	1671	-0.30	1783	6.70	3.17

NOTES: 1) () NOT USED DUE TO NEW SCHOOL INFLUENCES.
2) 2006-07 PROJECTIONS NOT INCLUDED IN AVERAGE % VARIATIONS.
3) ENROLLMENT BASED FROM 9TH MONTH.

DISTRICT ENROLLMENT
5 YEAR HISTORIC ACTUALS

FISCAL YEAR	PK-12 ENROLLMENT (4TH MONTH)	% INCREASE OVER PREVIOUS YEAR
2000-2001	27,821	
2001-2002	28,725	3.2%
2002-2003	29,544	2.8%
2003-2004	31,009	5.0%
2004-2005	32,162	3.6%
2005-2006	34,091	6.0%
AVERAGE	1,254	4.1%

**DISTRICT ENROLLMENT
PROJECTION COMPARISONS**

PLAN YEAR	DOE COFTE 7/31/06	DISTRICT 5-YEAR AVERAGE 4.12%	URBANOMICS	POPULATION PROJECTION FROM COUNTY
2006-07	35,450	35,520	35,381	33,580
2007-08	37,101	36,987	36,644	34,843
2008-09	38,917	38,511	37,907	36,106
2009-10	40,832	40,098	39,170	37,369
2010-11	42,786	41,750	40,433	38,632
5 YEAR INCREASE	7,336	6,226	5,052	5,052

Clay County Population (2005) - 165,984
 Population Growth Per Year - 6,485
 Student Generation Per Population - .1947
 District Official 2006/07 Projection - 35,520

Clay District 2006 Capital Outlay FTE Forecast

Grade	Actual 2002-2003	Actual 2003-2004	Actual 2004-2005	Actual 2005-2006	Projected 2006-2007	Projected 2007-2008	Projected 2008-2009	Projected 2009-2010	Projected 2010-2011
Birth Data for K	1,744	1,811	1,734	1,824	1,888	1,855	2,023	2,121	2,145
PreK	251	266	277	243	252	269	277	286	299
Grade K	2,014	2,265	2,362	2,584	2,686	2,651	2,868	3,014	3,058
Grade 1	2,033	2,178	2,329	2,491	2,737	2,852	2,823	3,040	3,199
Grade 2	1,964	2,204	2,316	2,502	2,679	2,942	3,069	3,042	3,269
Grade 3	2,104	2,227	2,406	2,572	2,756	2,952	3,236	3,387	3,370
Grade 4	2,376	2,198	2,249	2,419	2,633	2,822	3,022	3,312	3,469
Grade 5	2,329	2,522	2,355	2,451	2,578	2,806	3,007	3,221	3,530
Grade 6	2,471	2,508	2,680	2,620	2,674	2,813	3,060	3,280	3,513
Grade 7	2,431	2,614	2,654	2,852	2,770	2,822	2,967	3,224	3,457
Grade 8	2,405	2,538	2,677	2,814	3,004	2,927	2,977	3,127	3,395
Grade 9	2,863	2,769	2,804	3,017	3,125	3,322	3,281	3,322	3,469
Grade 10	2,220	2,447	2,508	2,638	2,784	2,888	3,063	3,046	3,079
Grade 11	1,968	2,192	2,468	2,594	2,728	2,876	2,991	3,164	3,175
Grade 12	1,803	1,704	1,814	1,956	2,044	2,159	2,276	2,367	2,504
PreK-12	29,232	30,632	31,899	33,753	35,450	37,101	38,917	40,832	42,786

Grade Level Summary

PreK-5	13,071	13,860	14,294	15,262	16,321	17,294	18,302	19,302	20,194
6-8	7,307	7,660	8,011	8,286	8,448	8,562	9,004	9,631	10,365
9-12	8,854	9,112	9,594	10,205	10,681	11,245	11,611	11,899	12,227
PreK-12	29,232	30,632	31,899	33,753	35,450	37,101	38,917	40,832	42,786

Growth Summary *

PreK-5	968	1,059	973	1,008	1,008	1,008	1,000	892	734
6-8	275	162	114	442	442	442	288	328	328
9-12	611	476	564	1,816	1,816	1,816	1,915	1,954	1,954
PreK-12	1,854	1,697	1,651	1,816	1,816	1,816	1,915	1,954	1,954

* Growth for the first year is the difference between the current year and the highest of the three previous years. Subsequent growth is the difference between each year and the prior year. Negative differences are shown as 0.

**DELAYING ELEMENTARY "R" TO 2009-10
ENROLLMENT PROJECTIONS
DISTRICT SCHOOLS CLAY COUNTY**

SCHOOL	6 YR % VAR	2006-07	% VAR	2007-08	% VAR	2008-09	% VAR	2009-10	% VAR	2010-11
AES	--	1001	6.00	1061	6.00	899	6.00	953	6.00	1010
CEB	-4.30	718	1.40	728	1.40	738	1.40	568	1.40	576
CHE	-0.50	518	0.00	518	0.00	518	0.00	518	0.00	518
CGE	--	--	--	774	2.00	790	2.00	806	2.00	822
DIS	2.84	992	2.84	1020	2.84	1049	2.84	1079	2.84	1110
FIE	4.05	1135	2.00	1158	2.00	1181	2.00	1205	2.00	1229
GPE	-1.50	687	-1.50	677	0.00	677	0.00	677	0.00	677
KHE	1.38	822	1.38	833	1.38	845	1.38	857	1.38	869
LAE	10.98	1193	10.00	1312	10.00	720	8.00	778	8.00	840
LES	-0.92	597	-0.92	591	0.00	591	0.00	591	0.00	591
MRE	0.70	571	0.70	575	0.70	579	0.70	583	0.70	587
MBE	3.92	684	3.92	711	3.92	739	3.92	768	3.92	798
MCE	-1.24	533	-1.24	526	0.00	526	0.00	526	0.00	526
OPE	0.38	552	0.00	552	0.00	552	0.00	552	0.00	552
PES	2.34	1124	2.00	1147	2.00	1170	2.00	1018	2.00	1038
ROE	8.65	1055	3.50	433	1.50	440	3.50	455	5.00	478
RVE	-1.88	749	-1.00	741	0.00	741	0.00	741	0.00	741
SBJ	-1.00	625	-1.00	619	0.00	619	0.00	619	0.00	619
SPC	18.10	696	1.00	703	1.00	710	1.00	717	1.00	724
TBE	14.15	1165	10.00	1282	10.00	1410	10.00	1225	10.00	1348
TES	23.33	854	6.00	790	8.00	853	10.00	938	10.00	1032
WEC	0.83	568	0.00	568	0.00	568	0.00	568	0.00	568
WES	-4.82	914	2.00	932	2.00	951	3.00	980	3.00	1009
ELEM "W"	--	--	--	--	--	971	6.00	1029	8.00	1111
ELEM "R"	--	--	--	--	--	--	6.00	684	8.00	738
ELEM "X"	--	--	--	--	--	723	8.00	781	10.00	859
ELEM "Z"	--	--	--	--	--	--	--	897	20.00	1076
GCJH	0.85	869	2.00	886	3.00	913	5.00	959	5.00	1007
LAJH	--	1053	8.50	1138	10.00	1252	15.00	1440	10.00	1584
LJH	3.25	966	2.00	984	2.00	1004	2.00	1024	2.00	1045
OPJH	3.82	949	1.00	958	1.00	968	1.00	978	1.00	988
WJH	5.48	841	3.00	866	3.00	892	5.00	935	5.00	982
OLJH	--	--	--	--	--	--	30.00	900	25.00	1129
JH "PP"	--	--	--	--	--	--	--	--	--	--
BLC	-1.28	190	0.00	190	0.00	190	0.00	190	0.00	190
KH JR/SR	2.18	1421	2.18	1452	2.18	1484	2.18	1516	2.18	1549
OLS K-8	--	1212	35.00	1636	30.00	1382	--	--	--	--
CHS	8.10	1203	3.00	1239	3.00	1276	3.00	1314	4.00	1367
FIHS	23.85	2400	8.00	2592	8.00	2799	6.00	2967	5.00	3115
MHS	2.94	2200	6.00	2332	6.50	2484	6.00	2633	5.00	2382
OPHS	1.92	2680	1.92	2732	1.92	2785	1.92	2839	1.92	2046
RHS	3.17	1783	3.50	1845	4.50	1928	5.00	2024	5.00	2002
HS "QQQ"	--	--	--	--	--	--	--	--	--	1354
TOTAL		35,520		37,101		38,917		40,832		42,786

**PREVIOUSLY APPROVED
SCHOOL CONCURRENCY
INTERLOCAL AGREEMENT
REQUIREMENTS**

1. SCHOOL CAPACITY
2. CONCURRENCY SERVICE AREAS –

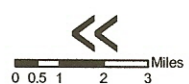
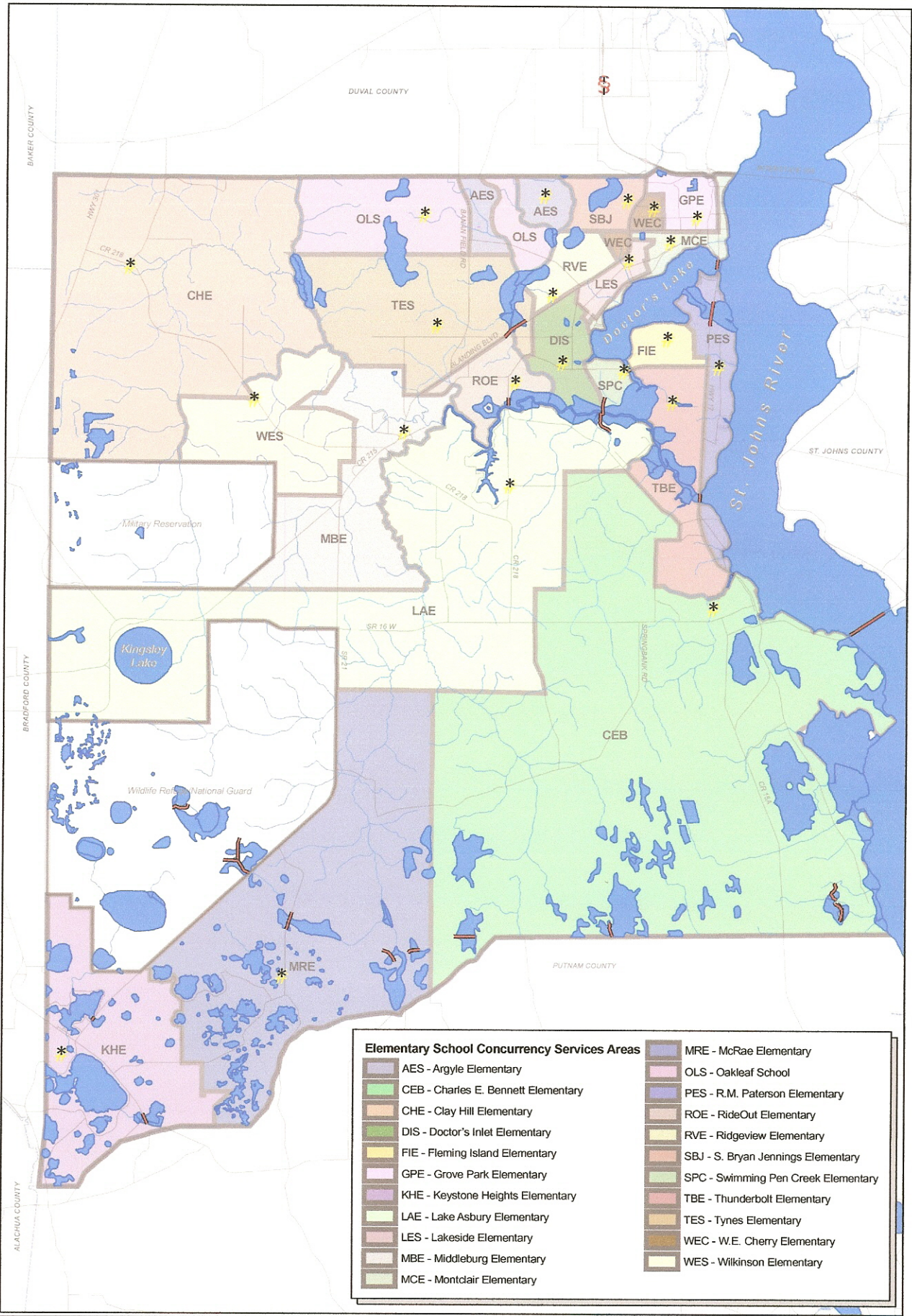
SCHOOL ATTENDANCE BOUNDARIES

1. School Capacity

	Dining Facility	Facility List	Perm SS**	School Capacity*
AES	1352	862	378	862
CEB	804	862	488	804
CHE	770	862	404	770
DIS	735	862	388	735
FIE	1485	862	330	862
GPE	925	862	355	862
KHE	773	862	476	773
LAE	1084	862	414	862
LSE	888	862	412	862
MRE	1485	862	239	862
MBE	671	862	451	671
MCE	781	862	270	781
PES	1336	862	474	862
ROE	1320	862	604	862
RVE	776	862	292	776
SBJ	1086	862	396	862
SPC	1384	862	404	862
TBE	1353	862	739	862
TES	1366	862	494	862
WEC	855	862	415	855
WES	1372	862	298	862
OPE	567	565	258	567
OLS	1568	1005	740	1005
GCSJH	1750	1005	882	1005
LAJH**	1747	1005	1086	1086
LJH	1263	1005	812	1005
OPJH	1262	1005	933	1005
WJH	1108	1005	736	1005
KHHS	2137	1615	907	1615
CHS**	2179	1600	1767	1767
FIH	2485	1600	1344	1600
MHS**	1637	1600	1633	1633
OPH**	2818	1600	2437	2437
RHS	1567	1600	1281	1567

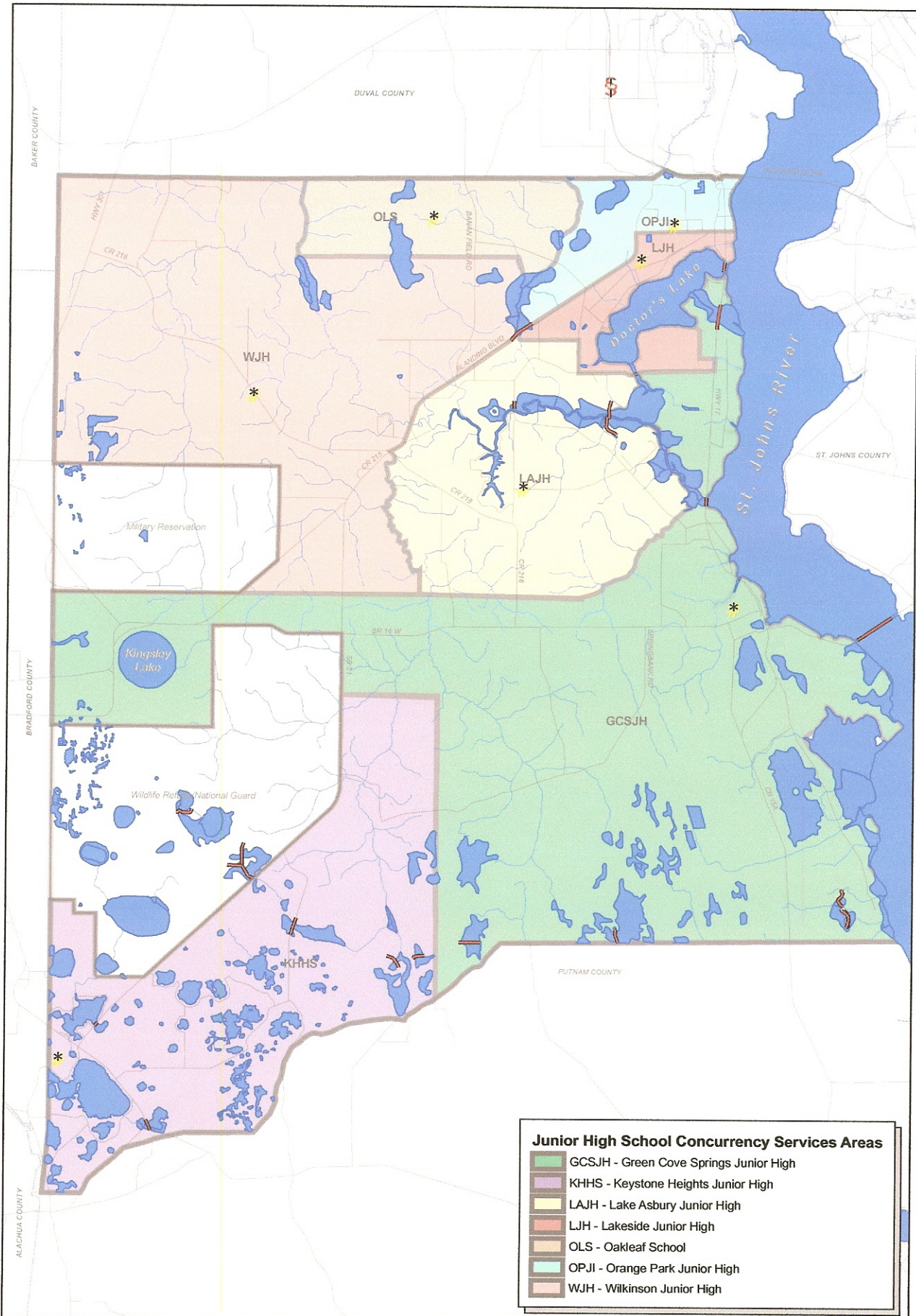
***School Capacity Definition:** The number of Student Stations the school can accommodate as determined by the lesser of the design standards of the Dining Facility or the current adopted Facility List.

** Exception: When/if the number of permanent student stations exceed the Facility List the larger will be used



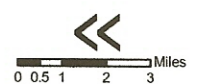
- * Elementary School
- FL Counties
- Major Roads
- Bridges
- Water

Clay County Elementary Schools



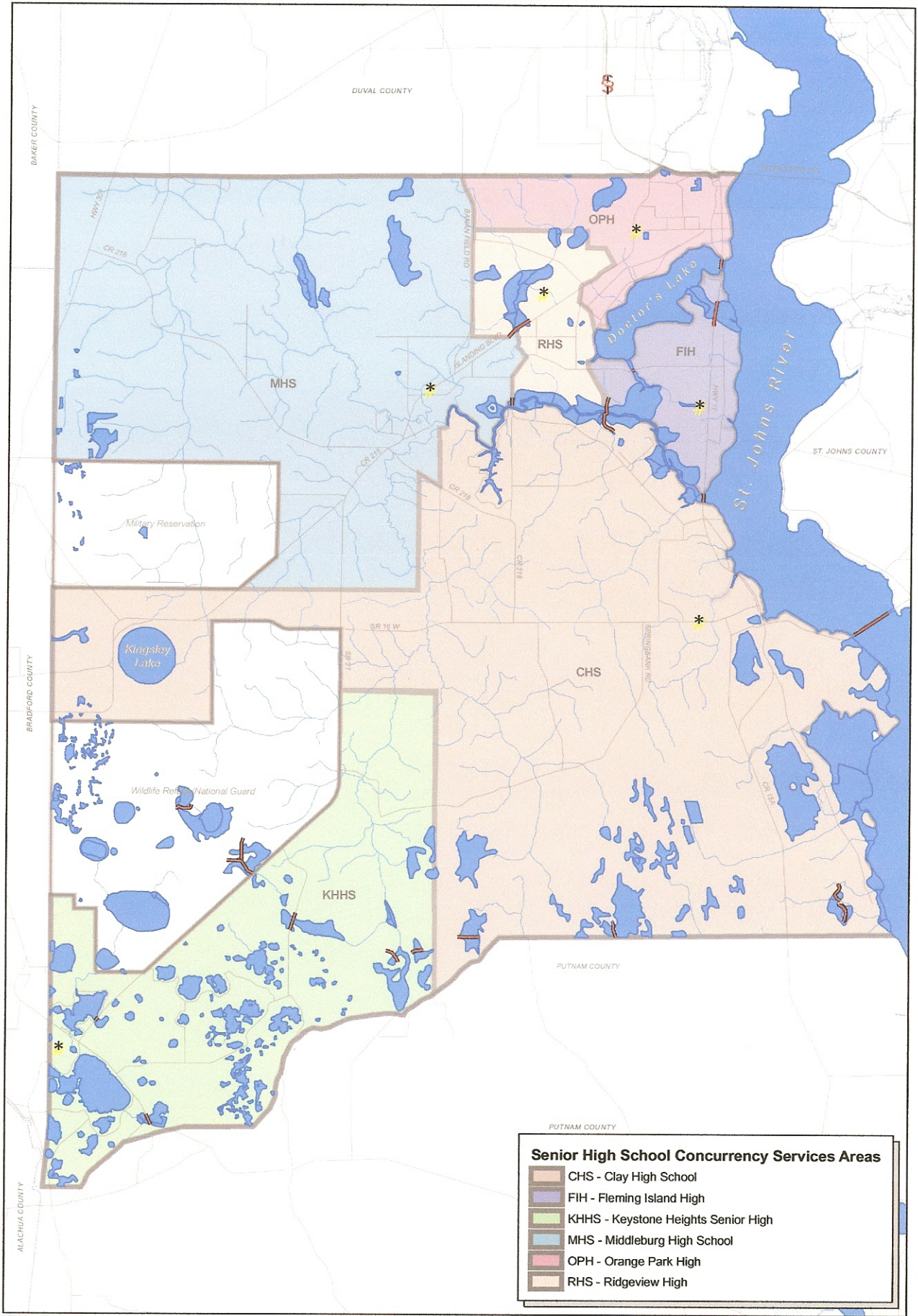
Junior High School Concurrency Services Areas

- GCSJH - Green Cove Springs Junior High
- KHHS - Keystone Heights Junior High
- LAJH - Lake Asbury Junior High
- LJVH - Lakeside Junior High
- OLS - Oakleaf School
- OPJI - Orange Park Junior High
- WJVH - Wilkinson Junior High



- Junior High School
- FL Counties
- Major Roads
- Bridges
- Water

Clay County
Junior High Schools



Senior High School Concurrency Services Areas

- CHS - Clay High School
- FIH - Fleming Island High
- KHHS - Keystone Heights Senior High
- MHS - Middleburg High School
- OPH - Orange Park High
- RHS - Ridgeview High

* Senior High School

FL Counties

~ Major Roads

~ Water

Bridges

Clay County
Senior High Schools